

NAV6 Display Upgrade Procedure

This document describes the procedure required to upgrade the software in NAV6 and NAV6plus display. The procedure applies to either:

- displays that have installed software earlier than Version 1.50,
- or
- displays not connected to a NAV6 Receiver V2 or NAV6 eNAVTEX Receiver.

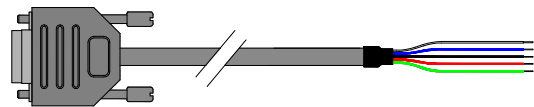
Note: If you have a NAV6 Receiver V2 or NAV6 eNAVTEX Receiver and your display software is Version 1.50 or higher you can upgrade the display software and NAVTEX database via the USB connector on the receiver. USB upgrade is not covered in this document.

What you will need:

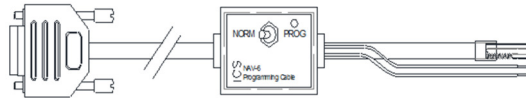
A PC, laptop or tablet running Windows XP or Windows 7 or 8.



A NAV6 Programming Cable.
NAV6 Display Programming Cable



Older Version NAV6 Programming Cable



A Serial to USB convertor



A valid product Upgrade Code from your upgrade voucher.



(Required if your computer does not have a serial port).

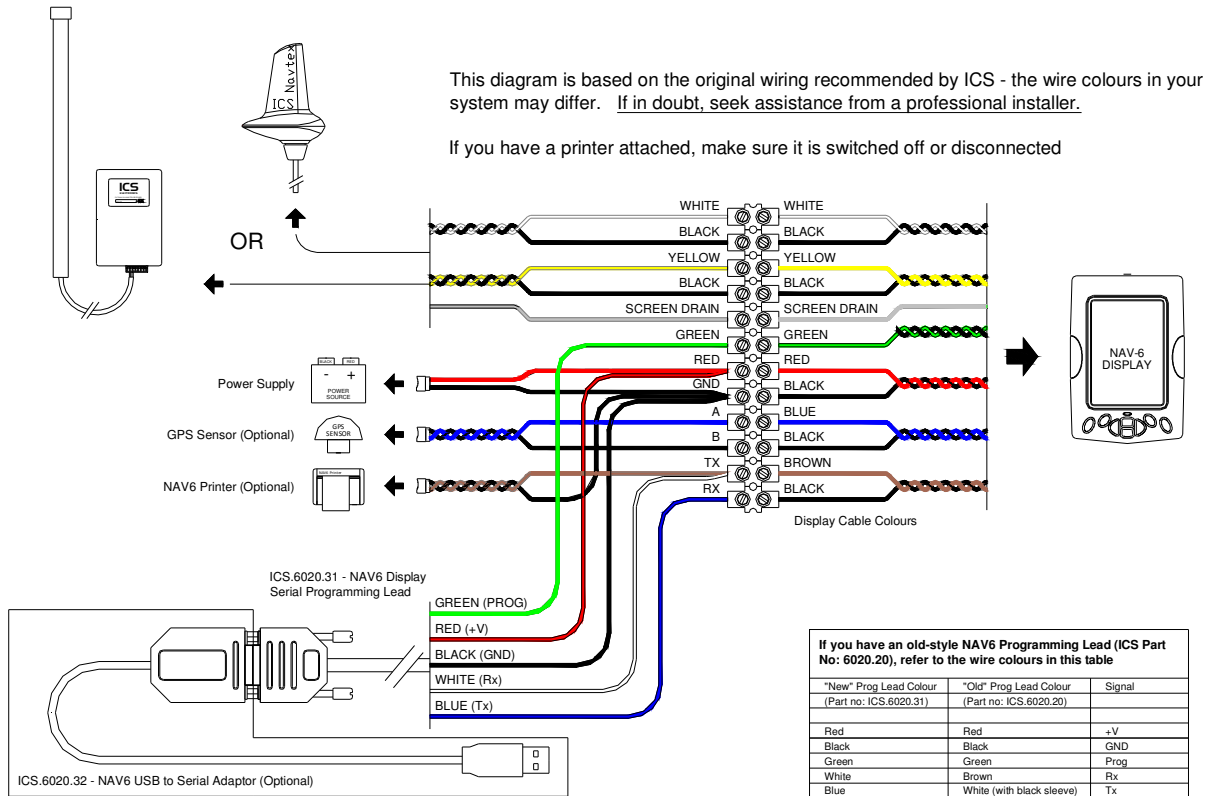
Please note: Updating an older version NAV6 display is a technical task. Please read these instructions carefully. If you are unsure about any of the procedure, we would recommend you seek assistance from a professional Marine Electronics Engineer or contact support at ICS for more information.

Also note, the station database will be updated after the upgrade and any messages that were stored will be erased.

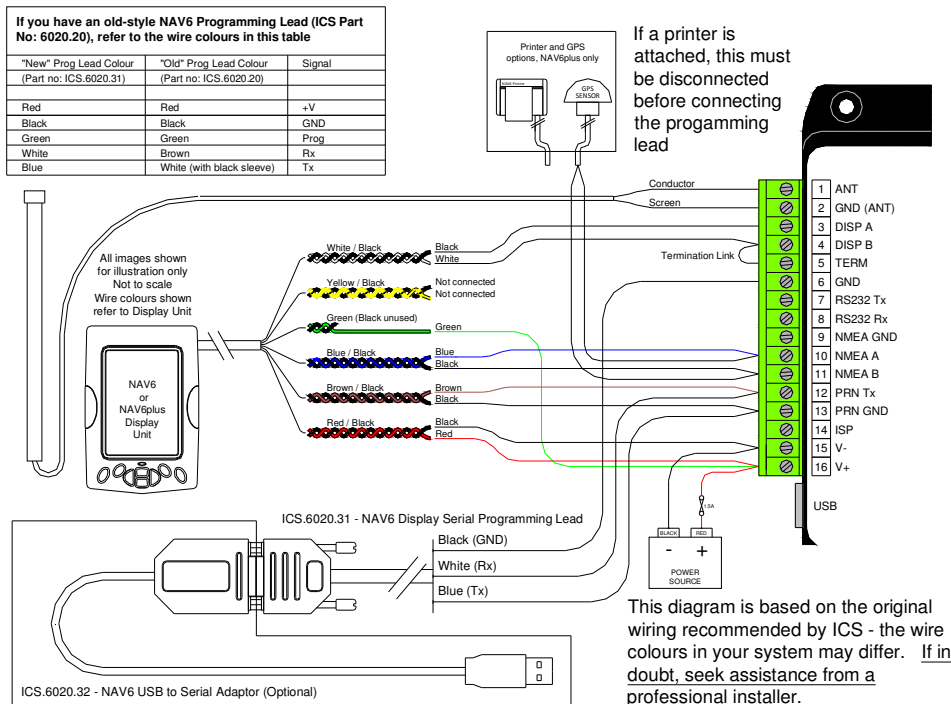
Upgrade Procedure:

1. Contact ICS by telephone or email and request an upgrade for your display. You will need to include details of the Upgrade Code from your voucher, the serial number of your NAV6/NAV6plus Display, your contact details and your email address.
2. By return you will receive a NAV6 software upgrade email.
3. The email should contain an attachment 'NAV6Autoloader._exe_'. Save the attachment to a convenient folder on your PC, renaming the file to 'NAV6Autoloader.exe' as you do so.
4. Ensure the power to your NAV6 system is turned off.
5. Connect the computer that will be used to upgrade your display using the Programming Cable as shown in the diagram below appropriate to your installation. If you are using an older Programming Cable (with an integrated switch box), ensure that the 'PROG' switch is in the 'ON' position.

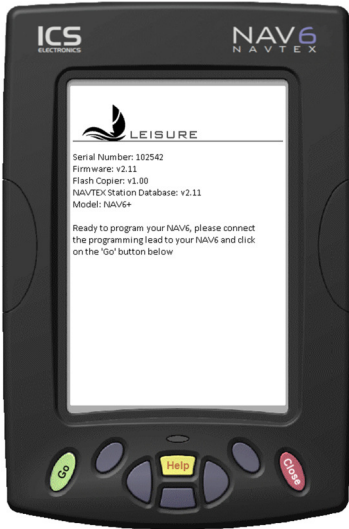
Programming Cable wiring for NAV6 displays with software earlier than Version 1.5 using the 'fin' style active antenna or a NAV6A receiver (white box)



Programming Cable wiring for NAV6 displays with software earlier than Version 1.5 using the a V2 or eNAVTEX antenna replacement (black box)



7. Switch on the power to the NAV6 display.
8. After a couple of seconds the red LED on the NAV6 Display should illuminate and stay on – the NAV6 Display screen should remain blank.
9. Now run the NAV6Autoloader by right clicking on it and selecting 'run' from the menu or double clicking on it.



10. Verify that the serial number displayed in the NAV6Autoloader is correct.
11. Verify that the Model displayed in the NAV6Autoloader is correct.
12. Click on the green 'Go' button. The autoloader will then detect your NAV6 Display and load the new Software. The programming will typically take less than a minute, after which time the message "Programming completed successfully" will be displayed on the NAV6Autoloader.



13. Switch off the power to the NAV6 system.
14. Disconnect and remove the programming cable and restore the NAV6 Display connections to their original configuration.
15. Switch on the power to the NAV6 system.
16. The display should start up normally. Verify that the software version (displayed on the start-up screen) is correct.

NAV6 Display Upgrade Procedure

MAN03034

ICS Electronics Limited
Unit V, Rudford Industrial Estate
Ford, Arundel, West Sussex
BN18 0BF
United Kingdom

Tel: +44 (0)1903 731101

Fax: +44 (0)1903 731105

E-Mail: sales@icselectronics.co.uk
support@icselectronics.co.uk

Website: www.icselectronics.co.uk