



NAV6 eNAVTEX V3 System (with and without antenna)

Installation and Quick Start Guide

MAN03345

Issue 3.0. October 2018.

ICS Electronics Limited
Unit V, Rudford Industrial Estate
Ford, Arundel, West Sussex
BN18 0BF
United Kingdom

Tel: +44 (0)1903 731101

E-Mail: sales@icselectronics.co.uk
support@icselectronics.co.uk

Website: www.icselectronics.co.uk

The technical data, information and illustrations contained in this publication were to the best of our knowledge correct at the time of going to print. We reserve the right to change specifications, equipment, installation and maintenance instructions without notice as part of our policy of continuous product development and improvement. No part of this publication may be reproduced, stored in a retrieval system or transmitted in any form, electronic or otherwise without permission in writing from ICS Electronics Ltd. No liability can be accepted for any inaccuracies or omissions in the publication, although every care has been taken to make it as complete and accurate as possible.

Copyright © 2018, ICS Electronics Limited. All rights reserved.

Important Information

This equipment is not approved for use by SOLAS convention vessels within the Global Maritime Distress and Safety System (GMDSS)

It is intended for use by leisure craft and other non-SOLAS vessels wishing to participate within GMDSS

Safety Warnings

This instrument is for use as an aid to sailors and should not lead to a reduction in the level of good seamanship required at all times

Reception of messages cannot always be guaranteed as this depends on local radio propagation

The correct magnetic variation must be input at the navigation instruments (e.g. GPS, electronic compass) for the accurate display of COG, set, waypoint bearing and heading.

Contents

Important Information	2
Safety Warnings	2
Contents	3
This Instruction Guide	4
What's in the Box?	4
Installing the eNAVTEX Receiver System	5
Fitting the NAVTEX Antenna	5
Fitting the NAV6 eNAVTEX Receiver Module	5
Installing the eNAVTEX App	7
Connecting an eNAVTEX Receiver to your PC/Laptop	10
Starting the NAV6 eNAVTEX App	12
Fuses	13
Specification	13
Antenna- Passive	13
Warranty	14
Technical Support	14

Congratulations on purchasing this high quality ICS Electronics Ltd product. Please take the time to read this manual carefully as it contains some essential information regarding the operation and maintenance of the product.

We recommend that you regularly visit the ICS website www.icselectronics.co.uk for information on updates, the availability of software upgrades, further options and support. The support pages contain frequently asked questions about the NAV6 that you may find useful. There is also a NAVTEX database providing a list of operational NAVTEX stations and their details.

The IMO and various national coastguards also operate informative websites that you may wish to visit; see www.icselectronics.co.uk/links.

This Instruction Guide

This instruction guide is intended for use in conjunction with the ICS NAV6 eNAVTEX V3 System (with and without antenna) only.

Should you require any information about operation of your NAV6 eNAVTEX system then please contact ICS Electronics or visit our web site www.icselectronics.co.uk.

What's in the Box?

Your NAV6 eNAVTEX System should contain the following items:

- NAV6 eNAVTEX V3 Receiver Module (Black Box)
- Passive NAVTEX Antenna with 10m Cable (NOT INCLUDED with eNAVTEX system without antenna)
- 4 x Stainless Steel Mounting Screws
- Detachable NAV6 Receiver Module Connector Strip (Green)
- eNAVTEX App (on CD)
- USB Type A to Micro Type B lead (1m)
- Quick Start Guide

If any of these items are damaged or missing please contact the seller you purchased this product from.

Installing the eNAVTEX Receiver System

Fitting the NAVTEX Antenna

Select a suitable position for the NAV6 eNAVTEX Receiver Module (black box).

If the system included an ICS passive NAVTEX antenna, select a suitable position for the antenna on your boat. Install the antenna and route the cabling to the position you have selected for the NAV6 eNAVTEX Receiver Module.

If the system is supplied without an antenna i.e. For use with an existing antenna or an alternative active antenna. In this case route a 50ohm antenna cable from this antenna system to the location where the receiver will be installed.

Fitting the NAV6 eNAVTEX Receiver Module

Turn off/remove fuses to the 12v power supply that you have selected for powering the eNAVTEX Receiver module.

Fit the NAV6 eNAVTEX Receiver module using the two stainless steel screws supplied or equivalent fasteners suitable for the chosen location.

Cut the antenna cable to a suitable length such that it will reach the NAV6 NAVTEX Receiver Module without pulling on the cable. Bare the Antenna cable end so that the core and screen wires are exposed and prepared suitable for connection to the detachable NAV6 Receiver Module Connector Strip (Green).

Install and connect a suitably fused power cable to the receiver from a convenient junction.

Connect your NMEA 0183 (IEC 61162-1 4800 baud or IEC 61162-2 38400 baud) network to the NAV6 Receiver Module Connector Strip (Green). As a minimum the NMEA data should provide position (RMC sentence) and time and date (ZDA sentence).

The diagram on the following page shows how to connect the system.

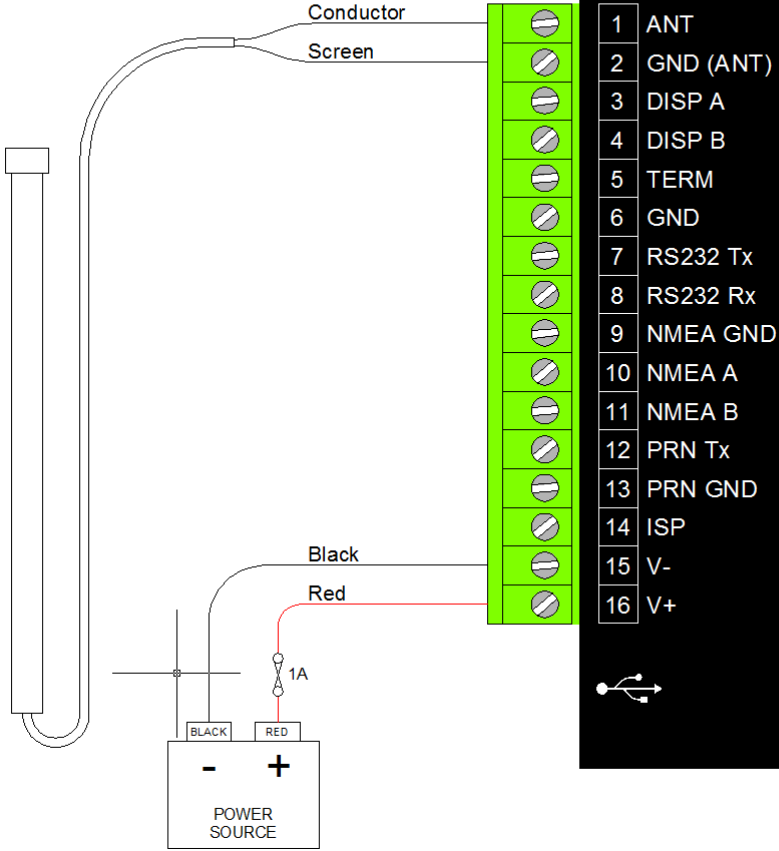
Fit the NAV6 Receiver Module Connector Strip (Green) into the NAV6 Receiver module apply power to the system.

If you are unsure about any these instructions we recommend you either contact ICS or seek the assistance of a marine electronics installer.

Turn the power back on to the circuit the new Receiver Module is now connected.

You are now ready install the eNAVTEX App software as explained in the following sections. **Install the eNAVTEX App software before connecting the eNAVTEX receiver to your PC/laptop via the USB cable.**

All images shown for illustration only
Not to scale



NAV6 eNAVTEX System Wiring Diagram

Installing the eNAVTEX App

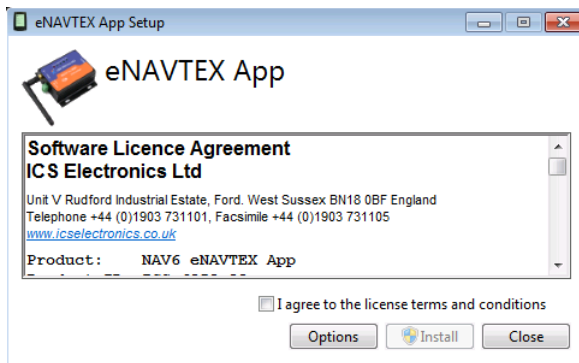
To install the eNAVTEX App:

- Make sure you have the administrative access permissions for installing apps on your PC/Laptop.
- Place the eNAVTEX app CD in your PC or laptop CD drive.
- The installer should auto-run, follow the on-screen instructions for installation.
- The CD includes a quick start manual to help get the eNAVTEX App installed and working with a NAV6 eNAVTEX Receiver.

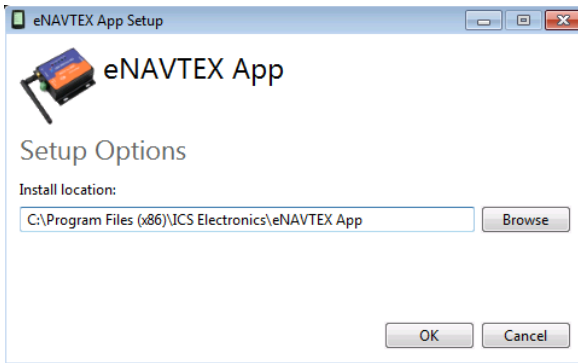
If the installer does not auto-run:

- From the Start menu, click on "Computer" and find your CD/DVD drive.
- Right mouse click and select "open."
- Double click on the "eNavtexSetup.exe" file
- Follow the on-screen instructions for installation.

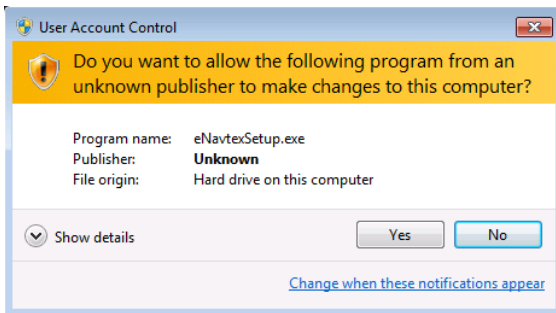
Initially you will see the software licence agreement page of the setup program. You will need to accept the terms of the licence agreement by ticking the box "I agree to the terms of the License Agreement" in order to proceed with the installation. There is also a PDF copy of the software licence agreement on the installation CD.



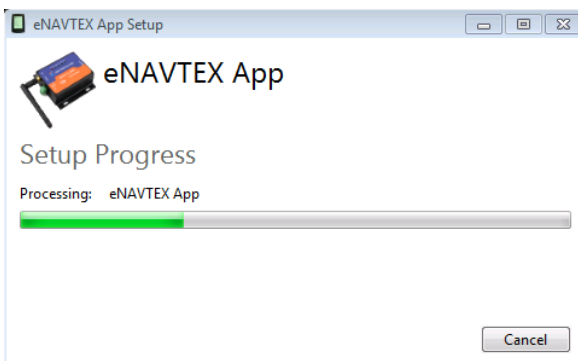
The eNAVTEX App program files will be copied in the installation folder. It is best to use the default folder unless there is good reason not to; e.g. the C: hard drive partition is nearly full. To use the default folder skip to the next paragraph. If you want to change the install folder, click the Options button to display the folder selection window. Now click the browse button to select an alternative folder or just edit the displayed path. Click OK when finished.



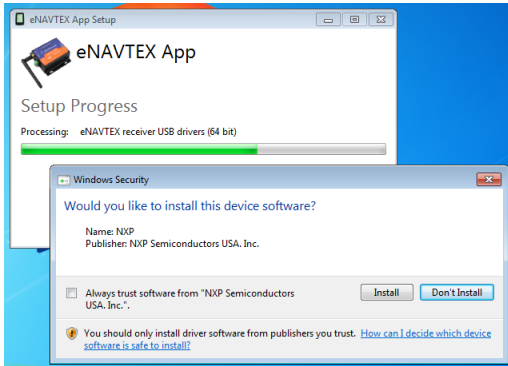
The setup program is now ready to install the files on your machine. Click install to start copying the files. At this point your Windows security settings may display a User Account Control pop up window.



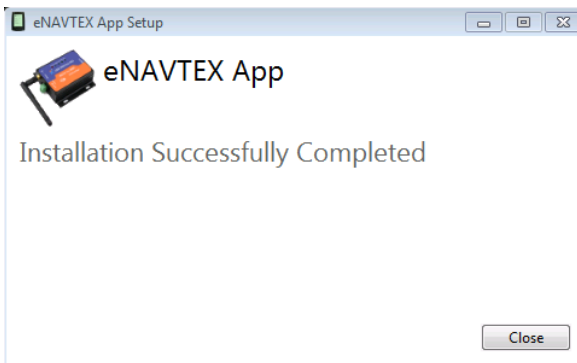
The setup program requires permission to install the eNAVTEX App on your computer, you must answer yes to continue the installation. The setup program will show a progress bar while installing the eNAVTEX App.



You may be prompted a couple of times to install device drivers from NXP Semiconductors USA. To allow the eNAVTEX receiver to communicate with the eNAVTEX App, you must click the Install button.



The final page appears when the installation is complete. Click the Close button to close the installer. The eNAVTEX App is now ready to run.



Before running the eNAVTEX App, it is a good idea to install your receiver and connect it to the PC/Laptop.

Connecting an eNAVTEX Receiver to your PC/Laptop

If you are going to use the eNAVTEX App with an eNAVTEX Receiver, you need to connect the eNAVTEX receiver to the PC/laptop; otherwise you should skip this section.

IMPORTANT: Install the eNAVTEX App before connecting the eNAVTEX receiver to your PC/laptop to ensure that the correct Plug and Play USB drivers are present.

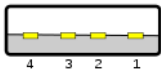
First follow the installation instructions supplied with your eNAVTEX Receiver to get your receiver powered up and connected to an antenna and optionally to a NAV6 display.

Then, connect the supplied 1m USB lead to the Micro USB Type B socket of the NAV6 eNAVTEX Receiver.



Micro USB Type B

Connect the other end (Type A) into a spare USB slot on your PC/Laptop.

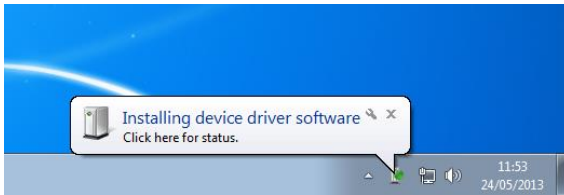


Type A

HELPFUL ADVICE: If the enclosed USB cable is too long or too short then a standard USB type A to micro type B lead can be used to replace the supplied lead. ICS stock a range of bulk head/flush mount USB sockets that may prove useful as an alternative to a fixed connection lead.

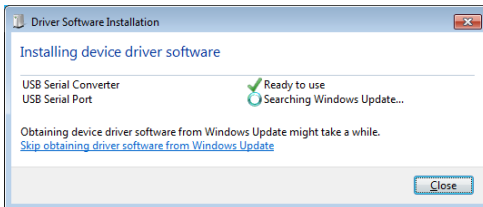
Device driver installation

The PC will automatically detect when the eNAVTEX receiver is connected and will attempt if necessary to install drivers for the device. Note: the eNAVTEX App setup program has already cached the required Plug and Play (PnP) device drivers ready for the eNAVTEX receiver.

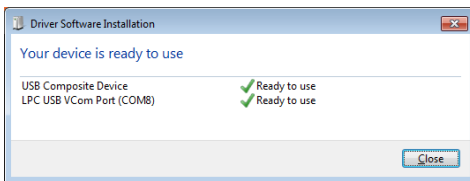


A notification will appear on the toolbar if driver software needs installing. If you click on the notification message you can see the driver installation progress. On Windows 10 the device drivers will install from the hard drive, on earlier OS versions, Windows update will attempt to load the latest drivers from the internet.

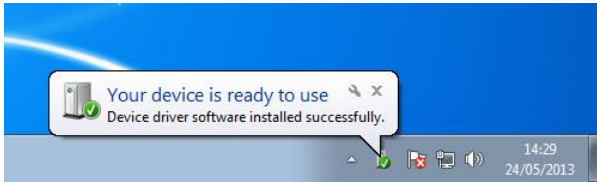
Searching the internet for the latest device drivers may take several minutes.



Windows update will install two device drivers: a USB serial converter and a USB serial port.



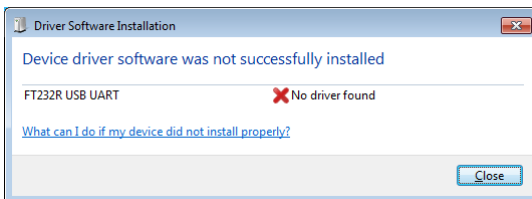
If the driver installation is successful you should get the message “Your device is ready to use” and a new USB COM port for the eNAVTEX receiver will have been created.



The installed COM port is the serial port for the eNAVTEX receiver; you may want to make a note of this COM port number for use later when configuring the eNAVTEX App.

Manual device driver installation

If for some reason the device drivers are not installed, the eNAVTEX App CD contains the required device driver files.



You will need to install the drivers manually from the eNAVTEX App installation CD.

- On the Start menu, click on “Computer” to open an explorer window.
- Locate your CD drive and open it to view the folders on the CD.
- Open the “eNAVTEX.RX.Drivers” folder and right click on the “lpc-vcom.inf” file and select the install option. Then repeat the process for the “LpcDevice.inf” file.
- Unplug the eNAVTEX receiver USB lead and reconnect it to the PC/laptop. The device drivers should now load correctly.

Starting the NAV6 eNAVTEX App

From the Windows Start menu, locate the eNAVTEX App and click to launch. The setup program will put the eNAVTEX App icon in the eNAVTEX App folder under All Programs and also in the quick launch

For detailed instructions on activating and using the NAV6 eNAVTEX App refer to the full user guide on the App CD or the online help.

Fuses

The **NAV6** eNAVTEX receiver has built-in resettable fuses on the 12V inputs. This fuse will trip if the unit due to a fault condition draws excessive currents. Power must be disconnected from the unit for 10 seconds in order for a fuse to reset.

Specification

Receiver Module

Power Consumption (typical)	90mA at 12V	
Antenna input	50ohm	
Weight	200g	
Physical Dimensions	Height:	96mm (excluding connector)
	Width:	146mm
	Depth:	35mm

Mounting

Bulkhead mounting via four self-tapping screws (supplied)

Connection

All connections made by screw terminal (with the exception of the PC USB connection)

Environmental

Not for outside use

Unit must be mounted below decks in a suitable dry location

Receive Frequency

490kHz and 518kHz

Antenna- Passive

Length	0.5m (1.5ft)
Weight	1kg
Bottom Diameter	28mm
Fittings	1"-14 threads female
Structure	Epoxy Fibreglass
Ferrule	Chrome Plated Brass
Base Torsion Force	5N at max Wind Speed
Frequency	490-518kHz
Impedance	50 ohm
Gain	-3db half wave dipole
Polarization	Vertical
Lighting Protection	DC Ground

Warranty

ICS Electronics Ltd warrants to the original end-user that this product will be free from defects in materials and workmanship for a period of one year from the date of purchase. During the warranty period, and upon proof of purchase, the product will be repaired or replaced (with the same or a similar model, which may be a refurbished model) at ICS Electronics' option, without charge for either parts or labour. For warranty repair, the unit must be returned, carriage pre-paid, to the ICS Electronics Ltd. dealer from whom it was first purchased. This limited warranty shall not apply if the product is modified, tampered with, misused, subjected to abnormal working conditions (including, but not limited to lightning and immersion in water) and use with power supplies and other options not specifically recommended by ICS Electronics Ltd.

Please contact us for further details of our warranty repair procedure.

Technical Support

Should you have any question or require technical support, please contact ICS on:

ICS Electronics Limited

Unit V, Rudford Industrial Estate

Ford, Arundel, West Sussex

BN18 0BF

United Kingdom

Tel: +44 (0)1903 731101

E-Mail: sales@icselectronics.co.uk

support@icselectronics.co.uk

Website: www.icselectronics.co.uk