



# ICS NAV6 eNAVTEX App Quick Start Guide

## MAN03350

Issue 1.1, October 2018.

ICS Electronics Limited  
Unit V, Rudford Industrial Estate  
Ford, Arundel, West Sussex  
BN18 0BF  
United Kingdom  
Tel: +44 (0)1903 731101  
E-Mail: [sales@icselectronics.co.uk](mailto:sales@icselectronics.co.uk)  
[support@icselectronics.co.uk](mailto:support@icselectronics.co.uk)  
Website: [www.icselectronics.co.uk](http://www.icselectronics.co.uk)

Congratulations on purchasing this high quality ICS Electronics Ltd product. Please take the time to read this manual carefully as it contains some essential information regarding the operation and maintenance of the product.

We recommend that you regularly visit the ICS website [www.icselectronics.co.uk](http://www.icselectronics.co.uk) for information on updates, the availability of software upgrades, further options and support. The support pages contain frequently asked questions about the NAV6 range that you may find useful. There is also a NAVTEX database providing a list of operational NAVTEX stations and their details.

The IMO and various national coastguards also operate informative websites that you may wish to visit; see [www.icselectronics.co.uk/links](http://www.icselectronics.co.uk/links).

The technical data, information and illustrations contained in this publication were to the best of our knowledge correct at the time of going to print. We reserve the right to change specifications, equipment, installation and maintenance instructions without notice as part of our policy of continuous product development and improvement. No part of this publication may be reproduced, stored in a retrieval system or transmitted in any form, electronic or otherwise without permission in writing from ICS Electronics Ltd. No liability can be accepted for any inaccuracies or omissions in the publication, although every care has been taken to make it as complete and accurate as possible.

### Important Information

This application is not approved for use by SOLAS convention vessels within the Global Maritime Distress and Safety System (GMDSS). It is intended for use by leisure craft and other non-SOLAS vessels wishing to participate within GMDSS

### Safety Warnings

This application is for use as an aid to sailors and should not lead to a reduction in the level of good seamanship required at all times. Reception of messages cannot always be guaranteed as this depends on local radio propagation.

### Minimum System Requirements

The eNAVTEX App is designed to run on PCs running the following operating systems:  
Windows 7  
Windows 8 (desktop mode)  
Windows 10

The minimum system requires are:  
1 GHz processor and 1 GB of RAM (32-bit) or 2 GB of RAM (64-bit).

## Installing the NAV6 eNAVTEX App

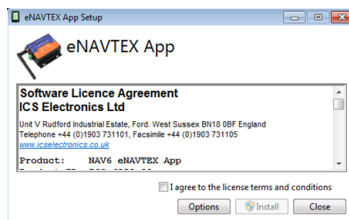
To install the eNAVTEX App:

- Make sure you have the administrative access permissions for installing apps on your PC/Laptop.
- Place the eNAVTEX app CD in your pc or laptop CD drive.
- The installer should auto-run, follow the on-screen instructions for installation.
- The CD includes a quick start manual to help get the eNAVTEX App installed and working with a NAV6 eNAVTEX Receiver.

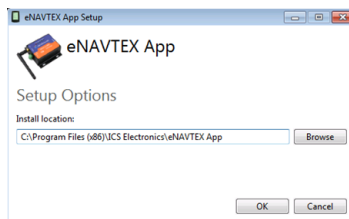
If the installer does not auto-run:

- Click on "Computer" and find your CD/DVD drive.
- Right mouse click and select "explore."
- Click on the "eNavtexSetup.exe" file
- Follow the on-screen instructions for installation.

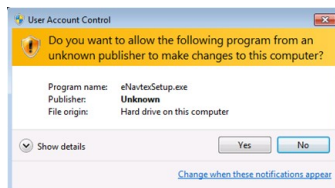
Initially you will see the software licence agreement page of the setup program. You will need to accept the terms of the licence agreement by ticking the box "I agree to the terms of the License Agreement" in order to proceed with the installation. There is also a PDF copy of the software licence agreement on the installation CD.



The eNAVTEX App program files will be copied in the installation folder. It is best to use the default folder unless there is good reason not to; e.g. the C: hard drive partition is nearly full. To use the default folder skip to the next paragraph. If you want to change the install folder, click the Options button to display the folder selection window. Now click the browse button to select an alternative folder or just edit the displayed path. Click OK when finished.

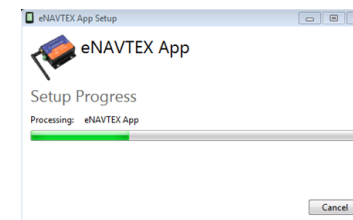


The setup program is now ready to install the files on your machine. Click install to start copying the files. At this point your Windows security settings may display a User Account Control pop up window.

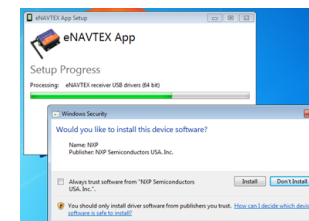


The setup program requires permission to install the eNAVTEX App on your computer, you must answer yes to continue the installation.

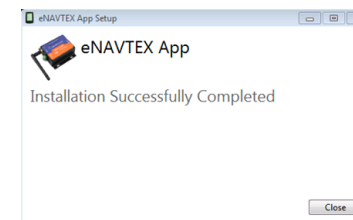
The setup program will show a progress bar while installing the eNAVTEX App.



You may be prompted a couple of times to install device drivers from NXP Semiconductors USA. To allow the eNAVTEX receiver to communicate with the eNAVTEX App, you must click the Install button.



The final page appears when the installation is complete. Click the Close button to close the installer. The eNAVTEX App is now ready to run.



Before running the eNAVTEX App, it is a good idea to install your receiver and connect it to the PC/Laptop. Instructions for this can be found in the application help and in the full manual located on the installation CD.

### Starting the NAV6 eNAVTEX App

From the Windows Start menu, locate the eNAVTEX App and click to launch. The installation will put the eNAVTEX App icon in the eNAVTEX App folder under All Programs and also in the quick launch list.